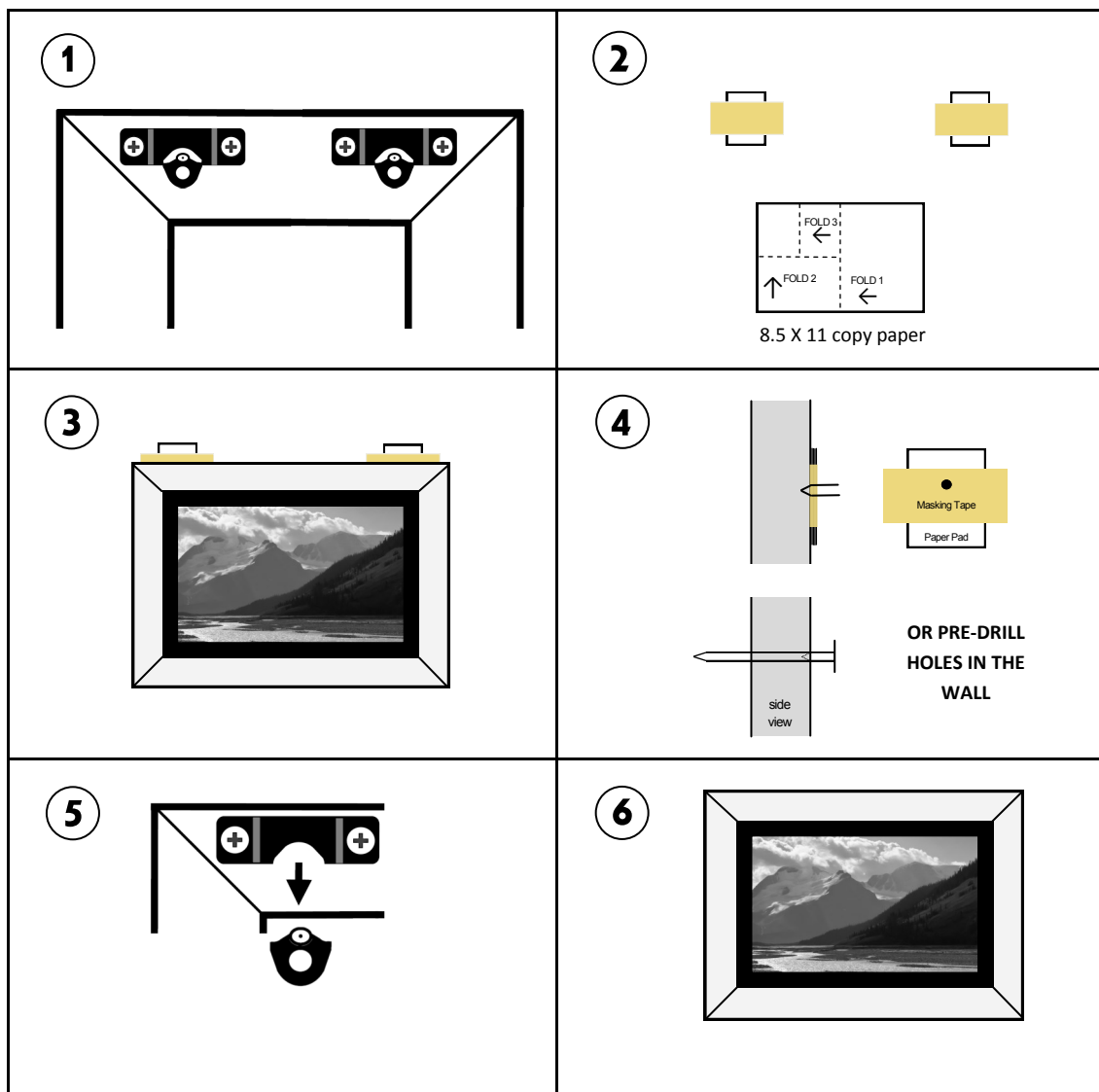


# PiCGENIE<sup>123</sup>®

## HANGING PICTURES ON PLASTER, WOOD and/or WOOD paneled WALLS

- (1) Attach two Accu-Hanger brackets.
- (2) Fold up a sheet of copy paper as shown and tape to wall where you'll be making the marks..
- (3) Position and level your picture on the wall, then push to make marks on the masking tape/pad of paper.
- (4) Pound nail into mark through the pad of paper making an indentation on the wall behind the pad of paper. Remove the nail and pad of paper, then pound nails straight into the wall in marks leaving the heads out 1/8". NOTE: You can also pre-drill holes the diameter of the nails to help limit the plaster from chipping. If you do this, you can then squeeze some white school glue into the holes before inserting the nails into the holes.
- (5) Remove marking tabs bending slightly down and then up to break off tabs.
- (6) Hang your picture.



# PiCGENIE<sup>123</sup>®

*Picture Hanging Made Easy!*